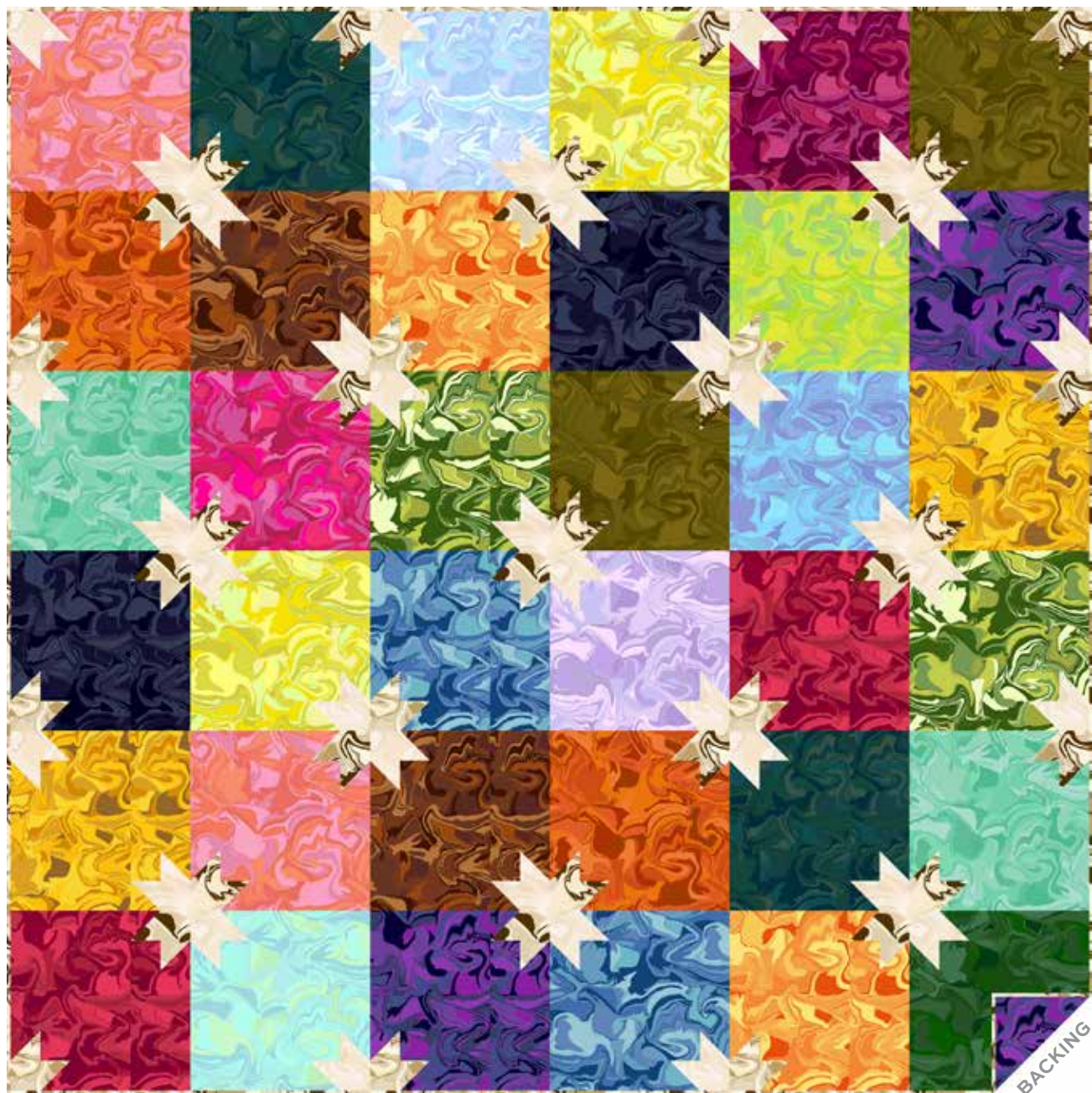


Nebula

EYE CANDY QUILTS



Fitz and Stars Quilt designed by: **Eye Candy Quilts**

Quilt Size: **72" x 72"** • Skill Level: **Beginner**

Fitz and Stars Quilt

Introducing Andover Fabrics new collection: **NEBULA** by Eye Candy Quilts

Quilt designed by Eye Candy Quilts

Quilt finishes 72" x 72"

36 Blocks: 12" x 12"

The swirling prints are the focal point of this striking quilt that evokes deep space. A nebula is an enormous cloud of dust and gas occupying the space between stars that acts as a nursery for new stars. The clever joining of the blocks brings these stars into focus.

Cutting Directions

Note: Read assembly directions before cutting patches.

All measurements are cut sizes and include ¼" seam allowances. WOF designates the width of fabric from selvedge to selvedge (approximately 42" wide).

Cutting for ONE Block

Fabric 22 OR 23:

Cut (6) squares 2½"

1 Print:

Cut (1) square 8½"

Cut (2) rectangles 2½" x 10½"

Cut (2) rectangles 2½" x 8½"

Cutting for ENTIRE QUILT

Fabrics 22, 23 From each:

Cut (108) squares 2½"

14 Prints From each (2 blocks):

Cut (4) rectangles 2½" x 10½"

Cut (4) rectangles 2½" x 8½"

Cut (2) squares 8½"

8 Prints From each (1 block):

Cut (2) rectangles 2½" x 10½"

Cut (2) rectangles 2½" x 8½"

Cut (1) square 8½"

Binding

Cut (8) strips 2½" x WOF for binding

Backing

Cut (2) lengths 41" x 82", pieced to fit quilt top with overlap on all sides

Making the Quilt

When making the blocks, refer to these labels and the list of fabrics on the last page of the pattern.

1 1506-LE	2 1506-E	3 1506-R	4 1506-LO
5 1506-O	6 1506-Y	7 1506-LY	8 1506-N1
9 1506-LV	10 1506-LG	11 1506-G	12 1506-G1
13 1506-T1	14 1506-T	15 1506-LT	16 1506-B
17 1506-B2	18 1506-B1	19 1506-LB	20 1506-LP
21 1506-P	22 1506-LN	23 1506-N	24 1506-V

Fabric Requirements

		Yardage
2 Prints	blocks	⅝ yard each
	Fabrics 22, 23	
14 Prints	blocks	⅜ yard each
	Fabrics 3-9, 11, 13, 14, 17, 18, 21, 24	
8 Prints	blocks	⅜ yard each
	Fabrics 1, 2, 10, 12, 15, 16, 19, 20	
Fab. 23 (Binding)		⅝ yard
Fab. 21 (Backing)		4¾ yards

Fitz and Stars Quilt

Making the Quilt

1. Refer to the Quilt Assembly for fabric combinations in each block. Note that half the blocks are made with a print and Fabric 22 squares and half are made with a print and Fabric 23 squares. Blocks are made with an easy stitch-and-flip technique. Draw a diagonal line on the wrong side of $2\frac{1}{2}$ " Fabric 22 squares. Position a marked square as shown on one end of a $2\frac{1}{2}$ " x $10\frac{1}{2}$ " rectangle, orienting the drawn line as shown (Diagram 1). Stitch on the marked diagonal line. Cut away the excess fabric. Press the corner up. Make 2 pieced rectangles like this. Likewise, orient a $2\frac{1}{2}$ " square on the opposite end of an $8\frac{1}{2}$ " rectangle as shown in Diagram 2. Stitch, trim, and press. Make a second pieced rectangle like this.

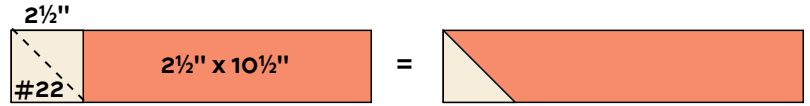


Diagram 1



Make 2 for each block

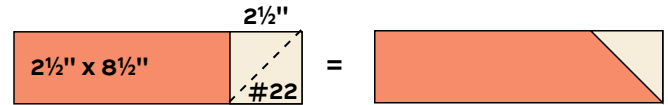
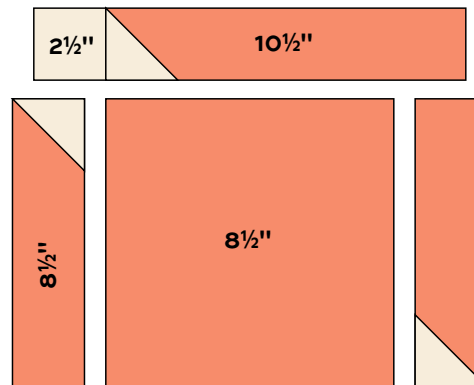


Diagram 2



Make 2 for each block

2. Referring to the Block Y Piecing diagram, arrange the pieced rectangles around the $8\frac{1}{2}$ " square, rotating the rectangles to make the design shown. Stitch the shorter rectangles to the sides of the center. Sew Fabric 22 squares to the ends of the $10\frac{1}{2}$ " rectangles. Sew these to the top and bottom. Repeat these steps to make 18 Block Y.

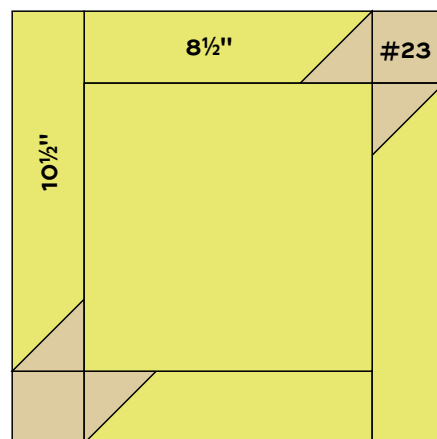


Block Y - Make 18

3. Repeat the steps to make 18 Block Z with Fabric 23. Hint: The blocks are constructed exactly the same. Fabric Z blocks are shown rotated 90 degrees after they are pieced.



4. Refer to the Quilt Assembly. On a large flat surface, position the blocks into 6 rows of 6 blocks each, alternating the Y and Z blocks as shown. Stand back to be certain that blocks are rotated correctly to form the stars where blocks meet. Once you are satisfied with the arrangement, join the blocks into rows, and then join the rows.

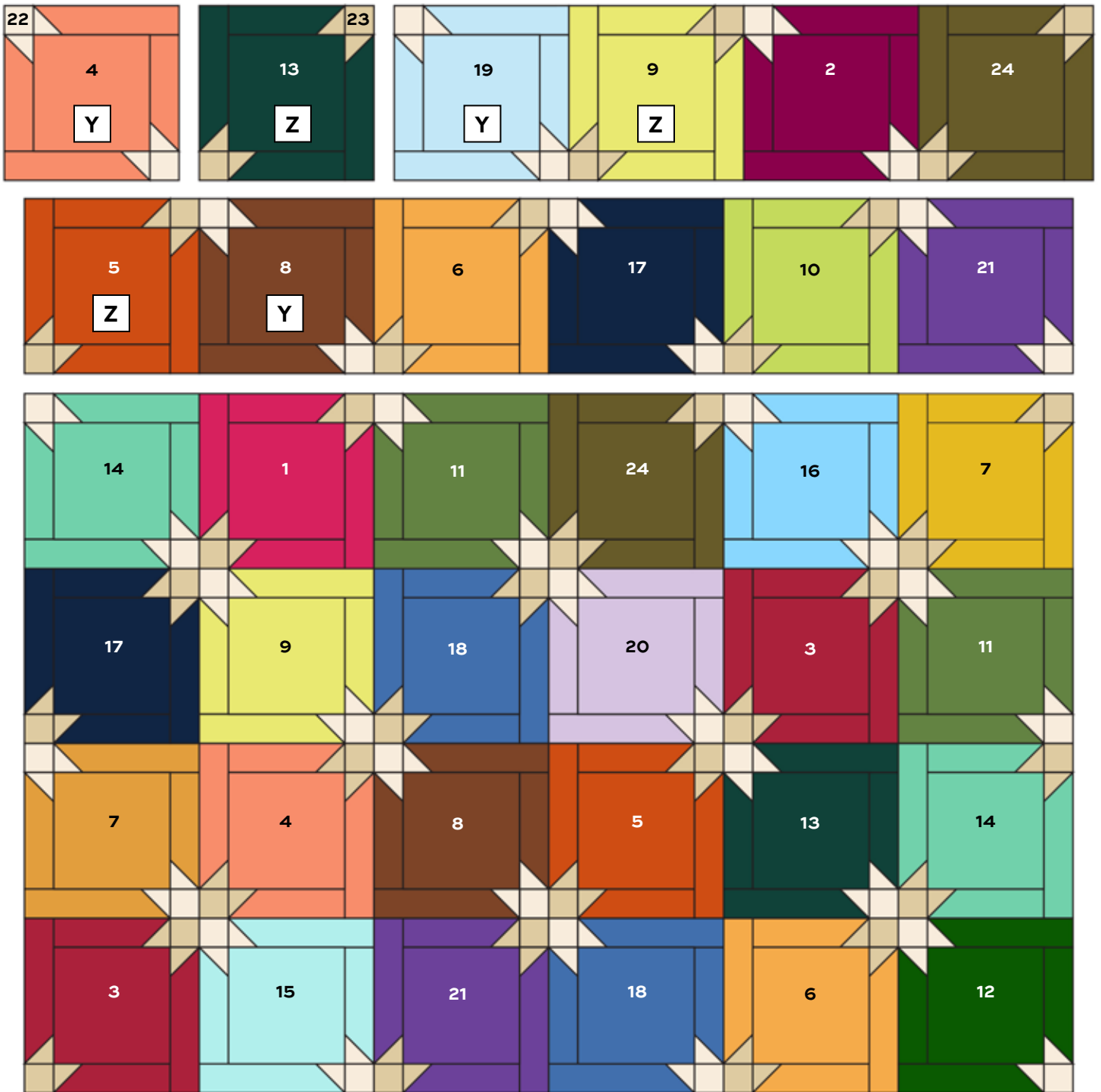


Block Z - Make 18

Finishing the Quilt

5. Layer the quilt with batting and backing and baste. Quilt in the ditch around patches. Quilt the center squares as you wish. Bind to finish the quilt.

Fitz and Stars Quilt



Quilt Assembly

Nebula

EYE CANDY QUILTS



1506-LE



1506-E



1506-R



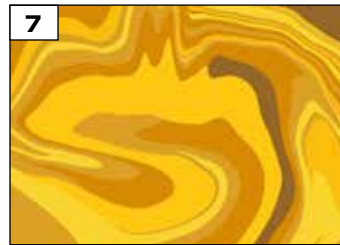
1506-LO



1506-O



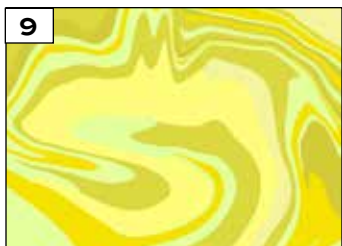
1506-Y



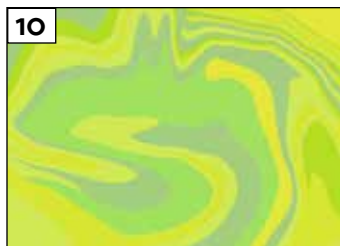
1506-LY



1506-N1



1506-LV



1506-LG



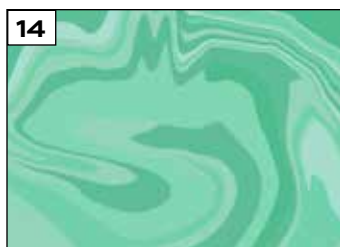
1506-G



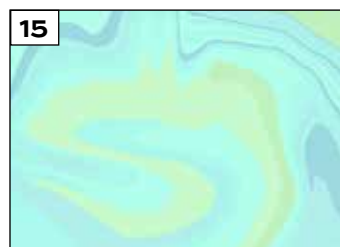
1506-G1



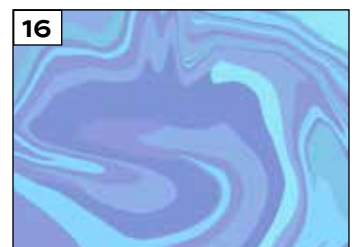
1506-T1



1506-T



1506-LT



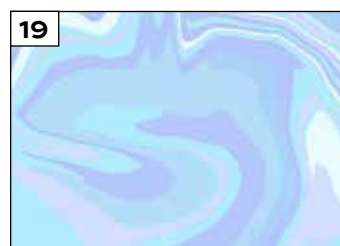
1506-B



1506-B2



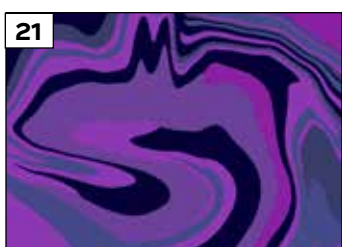
1506-B1



1506-LB



1506-LP



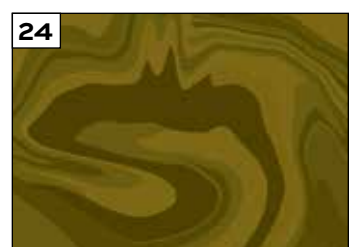
1506-P



1506-LN



1506-N



1506-V

All fabrics are used in quilt pattern. Fabrics shown are 100% of actual size.